

twilight

INSTRUMENTOS DE MEDICIÓN INDUSTRIAL

Termohigrómetro Industrial Ubibot, GS1 Ethernet/ Wifi 2.4 GHz, Ubi UB-GS1AETH1RS

www.twilight.mx

 / [twilightsadecv](https://www.facebook.com/twilightsadecv)

 / [twilightsadecv](https://twitter.com/twilightsadecv)

 / [twilightsadecv](https://www.youtube.com/twilightsadecv)

Use Cases

With its wireless monitoring, clear LCD display, industrial-grade sensors and online access to data, the GS1 has been used to give peace of mind in numerous settings including central server room, agriculture management, inventory monitoring and industrial production.



twilight

INSTRUMENTOS DE MEDICIÓN INDUSTRIAL

Industrial-grade Wireless Smart Multi-Sensor Device GS1



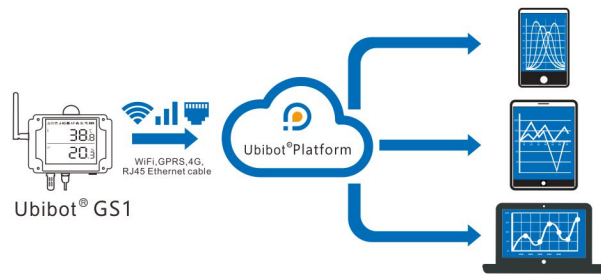
Introduction

The UbiBot® GS1 uses the cutting-edge IoT technologies to offer a more stable environmental monitoring with high performance. It is specially designed for industrial usage with IP 65 waterproof rating.

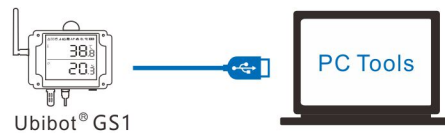
This device offers multiple modes of data transmission, including WiFi, GPRS/3G/4G, and Ethernet cable. It detects environmental data all day round and automatically syncs all the data to the UbiBot® IoT Platform. The clear 4" screen allows you to instantly view the latest data. You can also access your device readings in real-time via our App or using a browser anywhere in the world.

The embedded RS485 interface ensures your use of various external probes, such as soil temperature and humidity probe, wind speed probe, PH value probe, etc.

Online/Offline Access



The GS1 continuously monitors environmental conditions and syncs the data to the UbiBot® IoT Platform. By offering 4 ways of data transmission, it can ensure different users access the online data using our App or the website.



If there's no network available, the GS1 continues to monitor the environment and stores the data in its large internal memory. You are then able to manually sync the data over USB, or by temporarily moving the device to a location with WiFi.

Parameters

Net Weight: 440g+/-3g

Dimensions: 115mm×90mm×55mm

Power: Type-C/ DC (5V-12V)

Internal Lithium Battery: 3000Ah

Memory: 300,000 readings

External port: 1 Type-C

Size of LCD screen: 4"

Finish material: flame resistant ABS+PC

Main Features

Model	GS1-A	GS1-AL2G1RS	GS1-AL4G1RS	GS1-AETH1RS
Transmission mode	WiFi	WiFi GPRS	WiFi 3G 4G	WiFi RJ45 Ethernet cable
Internal Temp. & Humidity sensor ①	●	●	●	●
Internal light sensor ②		●	●	
External RS485 port ③		●	●	●
Use cases	Industry, Agriculture, Medical supply, Warehouse	Industry, Agriculture, Medical supply, Warehouse	Industry, Agriculture, Medical supply, Warehouse	Industry, Agriculture, Medical supply, Warehouse, Cold room, Server room

① Precision of internal temperature and humidity sensors $\pm 0.3^{\circ}\text{C}$, $\pm 3\%\text{RH}$, Monitoring range: -20 to 60°C , 10 to 90%. ② Precision of light sensor: $\pm 2\%$, monitoring range: 0.01 to 83k lux. ③ Probes with embedded RS485 interface can be supported, including air temperature and humidity probe, soil temperature and humidity probe, platinum resistor probe, light sensor, carbon dioxide probe, wind speed probe and PH value probe, etc. DS18B20 temperature probe is also supported.

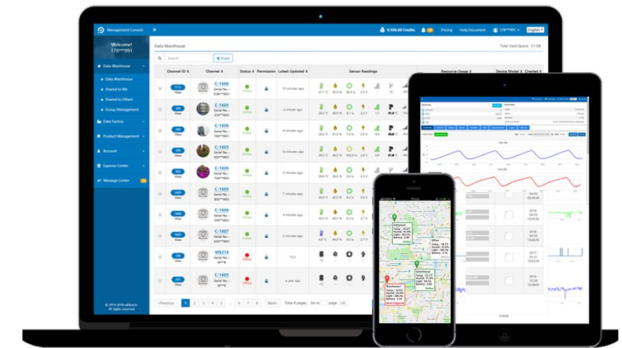
Smart Alerts



SMS text, Voice call, Email, App, HTTP, Audible alarm*

*Depending on the specific model purchased.

UbiBot® IoT Platform



The UbiBot® IoT Platform offers secure data management, intelligent alerts, unlimited storage and data analysis. Get deep insights into your environment via our app or website. Receive real-time notifications when any measurement goes outside the range you set. We also open up our RESTful API, offering you the chance to develop your own monitoring solutions.

Platform Features



*Any device user gets 200MB free storage and 1GB data traffic.

twilight

INSTRUMENTOS DE MEDICIÓN INDUSTRIAL



LLÁMANOS

+52(81) 8115-1400 / +52 (81) 8173-4300

LADA Sin Costo:
01 800 087 43 75

E-mail:
ventas@twilight.mx

www.twilight.mx



/ [twightsadecv](https://www.facebook.com/twightsadecv)



/ [twightsadecv](https://twitter.com/twightsadecv)



/ [twightsadecv](https://www.youtube.com/twightsadecv)